

North

Note:

Legend

Proposed shrub planting areas within planters, positioned within 450mm clean topsoil (imported and enriched) to areas shown. Typical species to include but not limited to:

- Calamagrostis 'Karl Foerster'; c/g, 3L
- Liriope muscari 'Big Blue'; c/g, 1L
- Agapanthus 'Bressingham White'; c/g, 3L
- Crocsmia Emily McKenzie'; c/g, 2L
- Pashysandra terminalis; c/g, 2L
- Grape Hyacinth (muscari); c/g, 1L (potted bulbs)
- Crocsmia 'George Davidson'; c/g, 2L
- Alchemilla mollis; c/g, 2L
- Kniphofia 'Lemon Popsicle'; c/g, 3L

Planters to be edged with Buxus sempervirens; c/g, 3L, maintained to a height of 400mm

Climbers to be positioned within 450mm clean topsoil (imported and enriched) to areas shown. Typical species to include but not limited to: Hedera helix 'Green Ripple'; c/g, 2L.

Bulb Planting to be positioned within 450mm clean topsoil (imported and enriched) to areas shown. Typical species to include but not limited to: Allium 'White Giant', Tulipa 'Triumphator'.

Proposed small trees/large shrubs, typical species to include but not limited to: Acer palmatum; 1.5M-2.0M tall; 25-50L cg.

Proposed 40-50mm deep concrete paving slabs with contrasting colour banding.

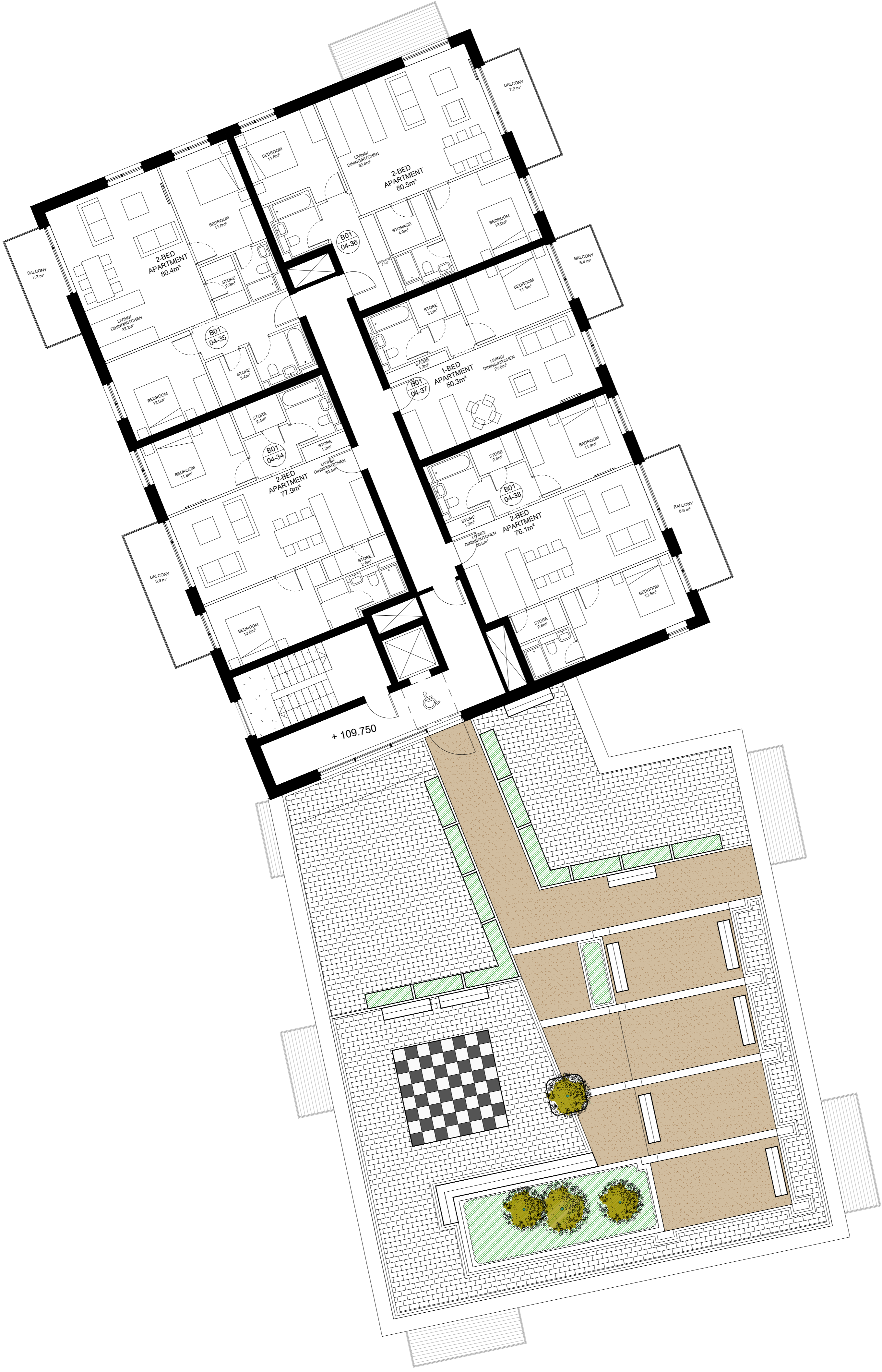
Proposed resin bound gravel with aluminium edge.

Proposed bespoke seating arrangement.

Proposed galvanised and powder-coated steel planters.

Proposed chess board.

Note: Proposed pergola to Architects details.



Rev	Date	Note

Precedent Images



Project name: Proposed Strategic Housing Development at Dunshaughlin East - Phase 2	Project number: 19-048
Drawing name: Landscape Plan Roof Garden Block 01	Drawing number: LP-05-PP

Drawing scale @ A1: 1:100	Drawn by: ad	Checked by: ld
Status: Planning	date: 30.09.2020	

Contact details: Linda Doyle (Director) Tel: 016067782 e-mail: linda@doyle-o'troigh.com Darrin c'Troigh (Director) Tel: 016067782 e-mail: darrin@doyle-o'troigh.com	Office address: Pembroke House, 28-32 Upper Pembroke St, Dublin 2.
---	---

doyle + o'troigh
landscape - architecture